

Ceramiques Coral

Fundada en 1890

Tel. 93 454 8776

info@ceramicascoral.com

www.ceramicascoral.com



Mosaic Hidràulic

Les rajoles són fabricades amb una barreja de pols de marbre blanc, ciment blanc, sorra i pigments, amb un gruix que oscil·la entre 1,8 i 2,2 cm. (que depenent de la seva mida) i dividida en 3 parts que s'introdueix artesanalment en un motlle i posteriorment serà comprimit amb premses hidràuliques que li conferirà una gran resistència i solidesa. La capa visible, és la més fina t'entra 3 i 5 mm. de gruix i està composta d'una mescla de ciment blanc, sorra de marbre i els pigments. Aquests pigments es barregen amb aigua donant lloc a una solució densa, la següent capa d'igual gruix que la capa pigmentada està composta per una barreja de ciment gris i sorra, la funció és absorbir l'excés d'aigua, i l'última capa de la rajola, està composta per una barreja de ciment i de sorra, que la seva porositat facilita el seu encolat.

L'elevada trituració i puresa dels seus components, permeten configurar uns dissenys amb colors nets, ofereixen una gran calidesa estètica, i la gran varietat de models, permet unes possibilitats úniques i personalitzades per a cada client.

Aquest catàleg només representa alguna de les possibles combinacions dels colors, cada client pot realitzar la seva pròpia combinació. Si no troba el model desitjat o vol crear o reproduir un disseny personalitzat, envieu-nos el model indicant la quantitat de metres a reproduir i s'ho valorarem sense cap cost.

Si necessita manuals d'instal·lació, manteniment i restauració visiti l'apartat Manuals i guies tècniques.



Mosaico Hidráulico

Las baldosas son fabricadas con una mezcla de polvo de mármol blanco, cemento blanco, arena y pigmentos, con un grosor que oscila entre 1,8 y 2,2 cm. (que dependen de su medida) y dividida en 3 partes que se introduce artesanalmente en un molde y que posteriormente será comprimido con prensas hidráulicas que le conferirá una gran resistencia y solidez. La capa visible, es la más fina de entre 3 y 5 mm. de grosor y está compuesta de una mezcla de cemento blanco, arena de mármol y los pigmentos. Estos pigmentos se mezclan con agua dando lugar a una solución densa, la siguiente capa de igual grosor que la capa pigmentada está compuesta por una mezcla de cemento gris y arena, cuya función es absorber el exceso de agua, y la última capa de la baldosa, está compuesta por una mezcla de cemento y de arena, que su porosidad facilita su encolado.

La elevada trituración y pureza de sus componentes, permiten configurar unos diseños con colores limpios, ofrecen una gran calidez estética, y la gran variedad de modelos, permite unas posibilidades únicas y personalizadas para cada cliente.

Este catalogo solo representa alguna de las posibles combinaciones de los colores, cada cliente puede realizar su propia combinación. Si no encuentra el modelo deseado o quiere crear o reproducir un diseño personalizado, envíenos el modelo indicando la cantidad de metros a reproducir y se lo valoraremos sin coste alguno.

Si necesita manuales de instalación, mantenimiento y restauración visite el apartado Manuales y guías técnicas.



The encaustic Cement Tiles

The tiles are manufactured from a powder mixture of white marble, cement, sand and pigments, with a thickness ranging between 1.8 and 2.2 cm. depending on its thickness measured and divided in three parts that are introduced into a mold by hand and subsequently be compressed using hydraulic presses to confer great strength and fastness. The visible layer is the thinnest of between 3 and 5 Mm. thick and is composed of a mixture of white cement, marble sand and pigments. These pigments are mixed with water resulting in a dense solution, the next layer of the same thickness as the pigmented layer is composed of a mixture of gray Portland cement and sand, whose function is to absorb excess water, and the last layer of the tile, consists of a mixture of cement and sand, which facilitates their bonding porosity.

The high crushing and purity of its components to configure some designs with clean colours provides warmth and variety of designs allows unique aesthetic possibilities, customized for each client.

This catalog represents only some of the possible combinations of colours; each client can make your own combination. If you do not find the model you want or you want to create a custom design, please send us the model indicating how many meters and we'll do the budget.

If you need manuals for installation, maintenance and restoration visit the manuals and technical guides section.



Les carreaux ciment

Les carreaux sont fabriqués à partir d'un mélange de poudre de marbre blanc, du ciment, du sable et des pigments, avec une épaisseur comprise entre 1,8 et 2,2 cm. en fonction de son épaisseur mesurée et divisée en trois parties qui sont introduites dans un moule à la main et ensuite être comprimés en utilisant des presses hydrauliques pour conférer une grande résistance et solidité. La couche visible est la plus mince comprise entre 3 et 5 mm. d'épaisseur et

est composée d'un mélange de ciment blanc, du sable de marbre et de pigments. Ces pigments sont mélangés avec de l'eau pour obtenir une solution dense, la couche suivante de la même épaisseur que la couche pigmentée est composée d'un mélange de ciment Portland et du sable gris, dont la fonction est d'absorber l'excès d'eau, et la dernière couche de la tuile, se compose d'un mélange de ciment et de sable, ce qui facilite leur porosité de liaison.

Le haut écrasement et la pureté de ses composants à configurer certains modèles avec des couleurs propres fournissent de la chaleur et de la variété des conceptions permet possibilités esthétiques uniques, personnalisés pour chaque client.

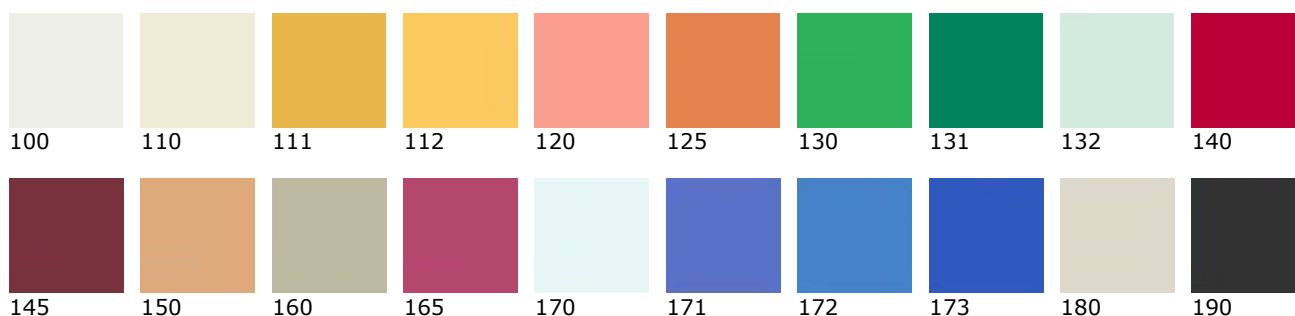
Ce catalogue ne représente que quelques-unes des combinaisons possibles de couleurs, chaque client peut faire votre propre combinaison. Si vous ne trouvez pas le modèle que vous souhaitez ou voulez créer un design personnalisé, s'il vous plaît envoyez-nous le modèle indiquant combien de mètres et nous ferons le budget.

Si vous avez besoin de manuels d'installation, d'entretien et de restauration de visiter les manuels et guides techniques section.

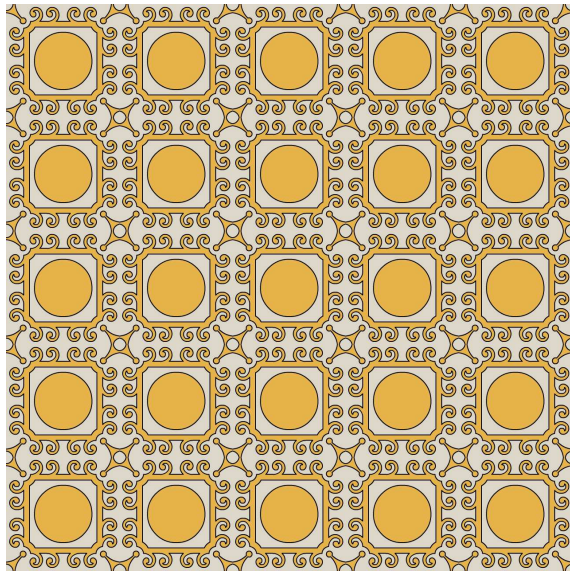
Série Mar

Colors · Colores · Colors · Couleurs

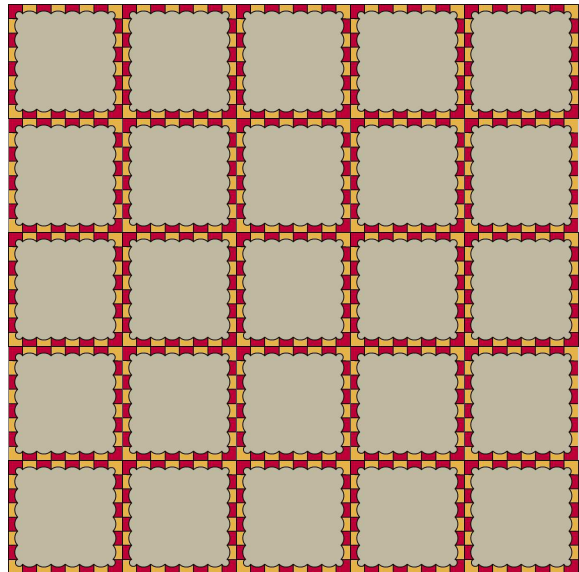
Disponibile · Disponible · Available · Disponible : 5x5, 7x7, 11x11, 15x15, 20x20, 25x25 cm.



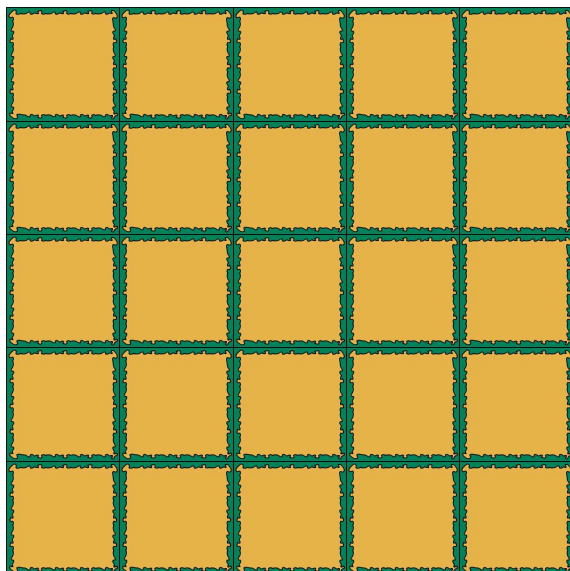
20x20 - Dissenys · Modelos · Designs · Designs



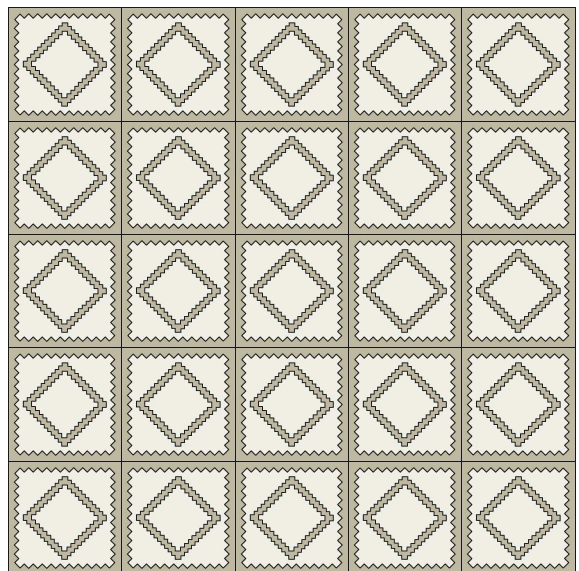
MO-12



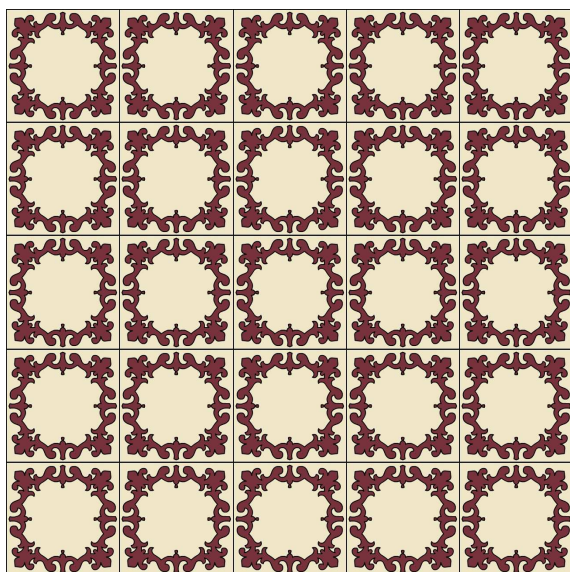
MO-13



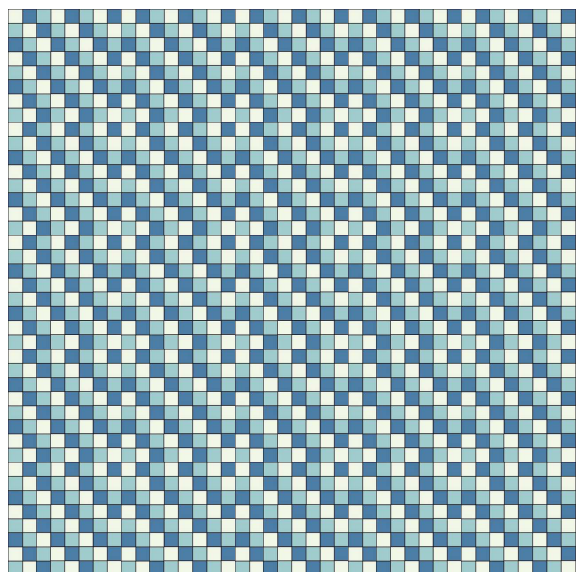
MO-14



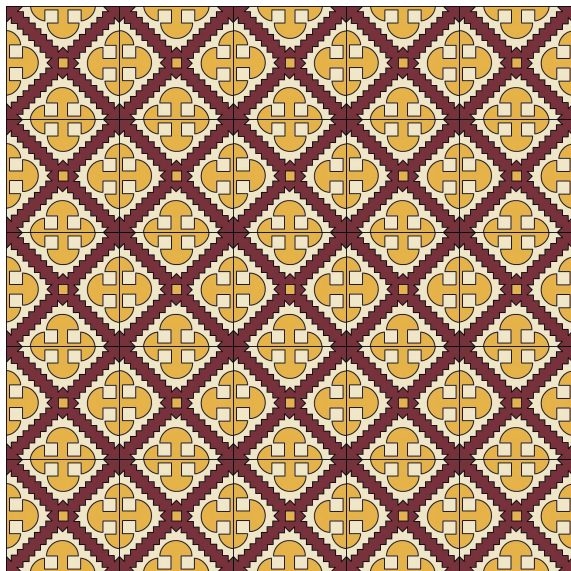
MO-15



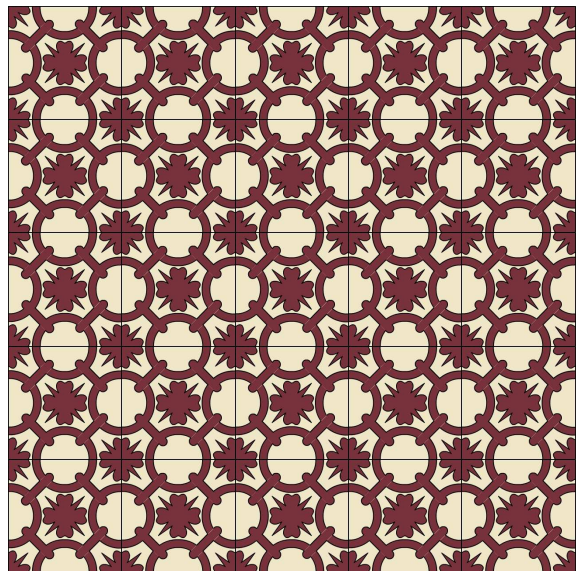
MO-16



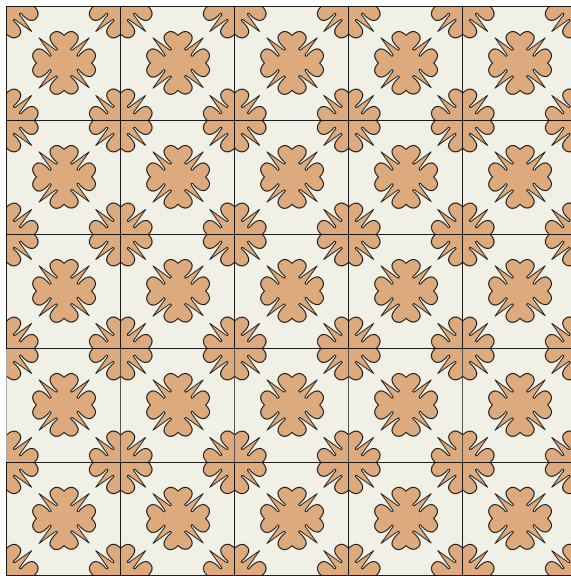
MO-17



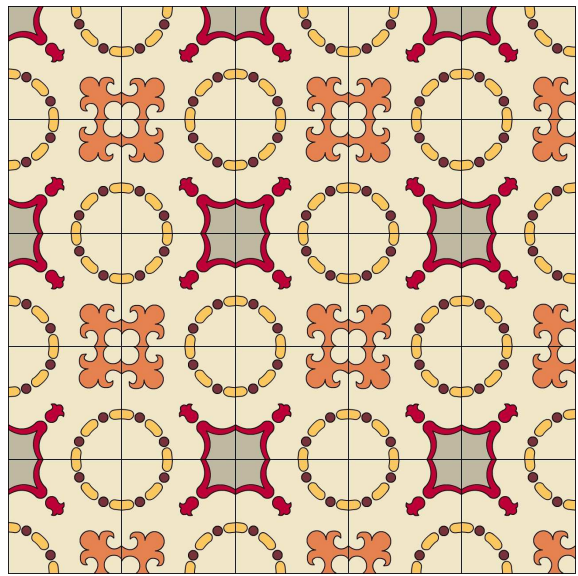
MO-18



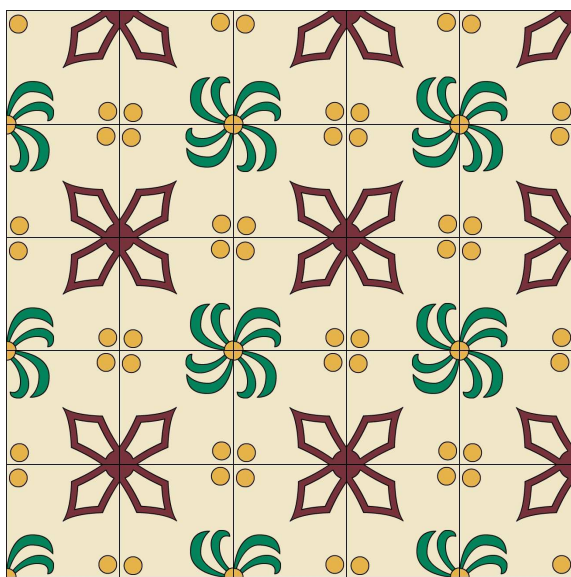
MO-19



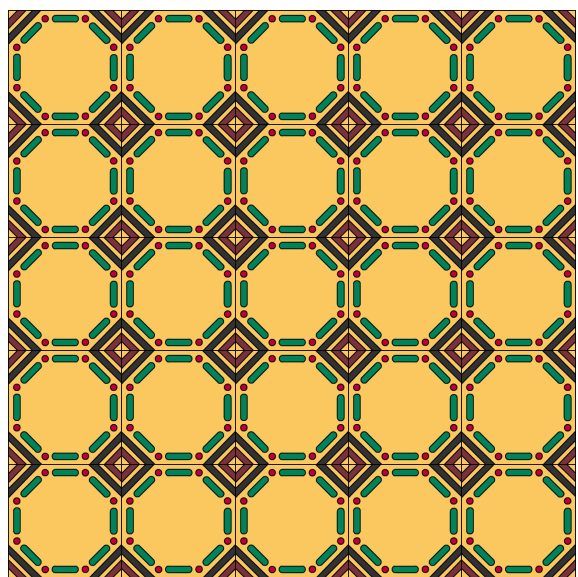
MO-23



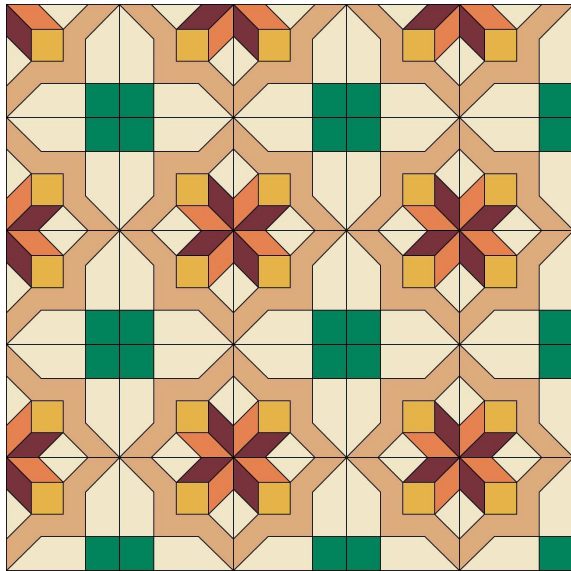
MO-24



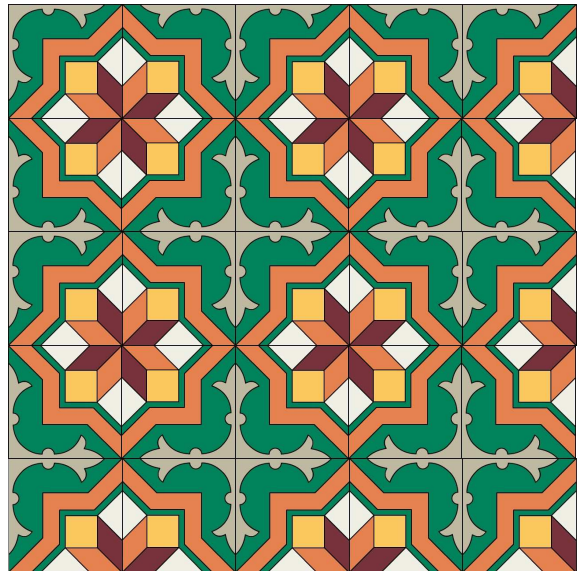
MO-28



MO-30



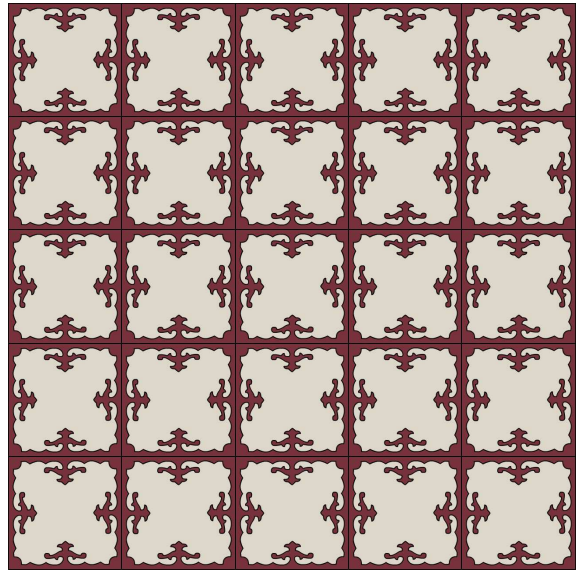
MO-31



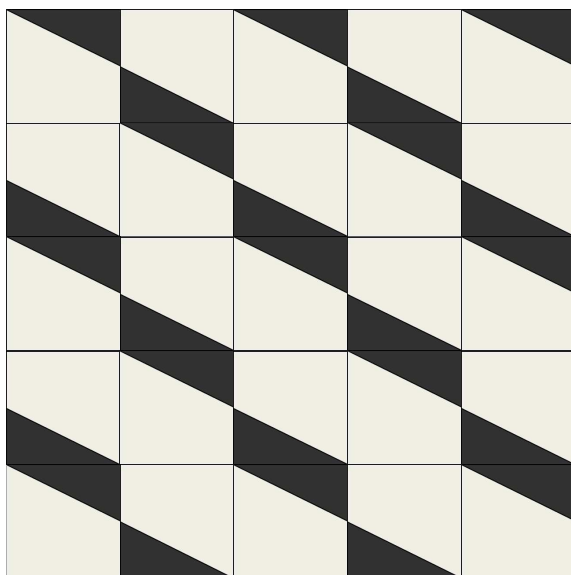
MO-32



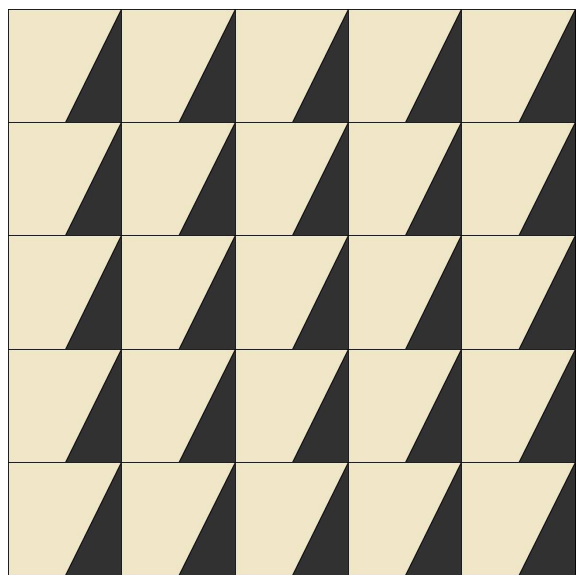
MO-34



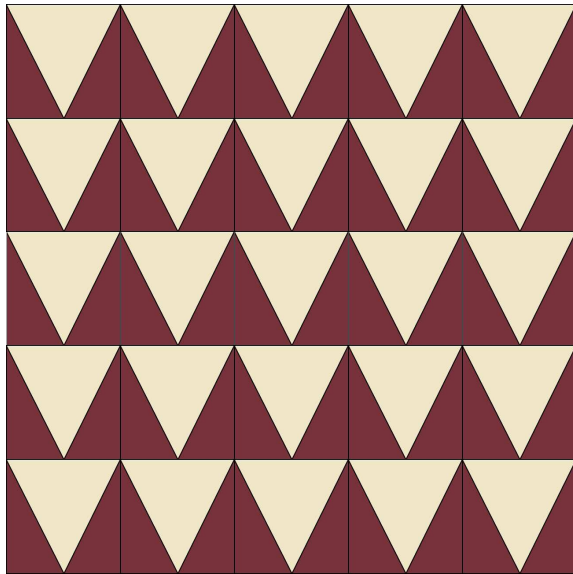
MO-37



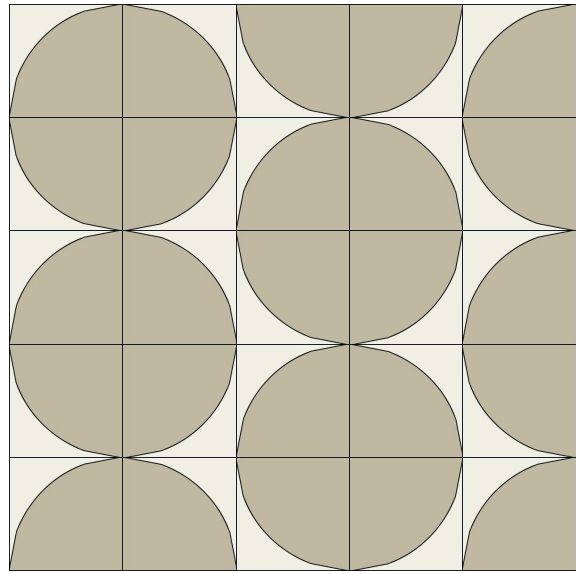
MO-40



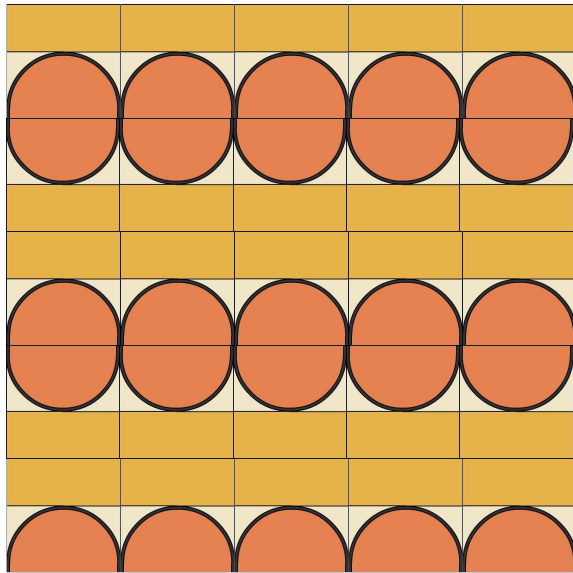
MO-41



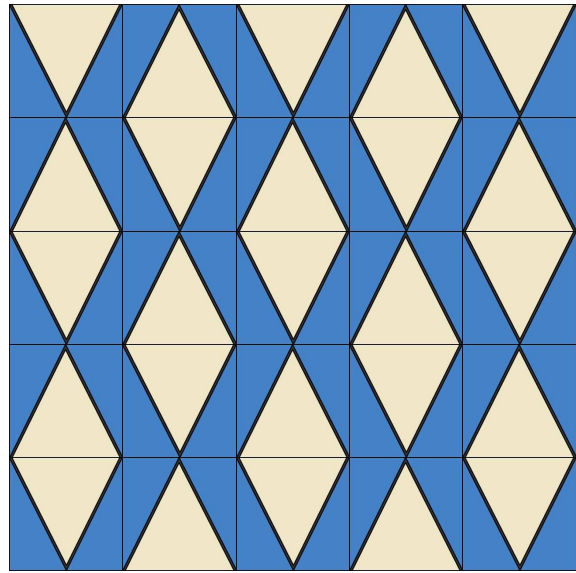
MO-42



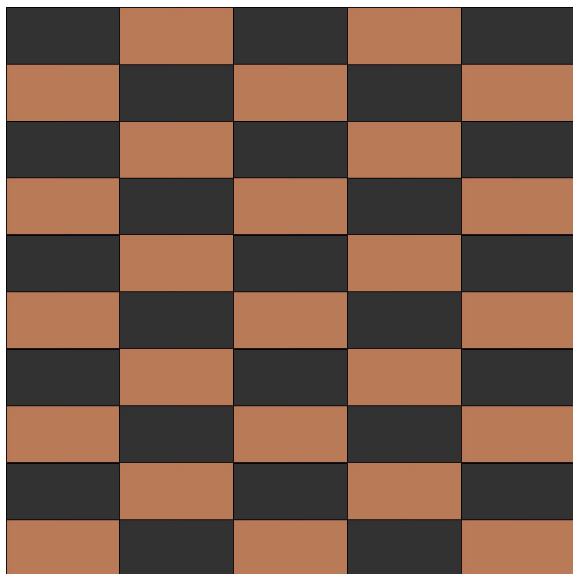
MO-43



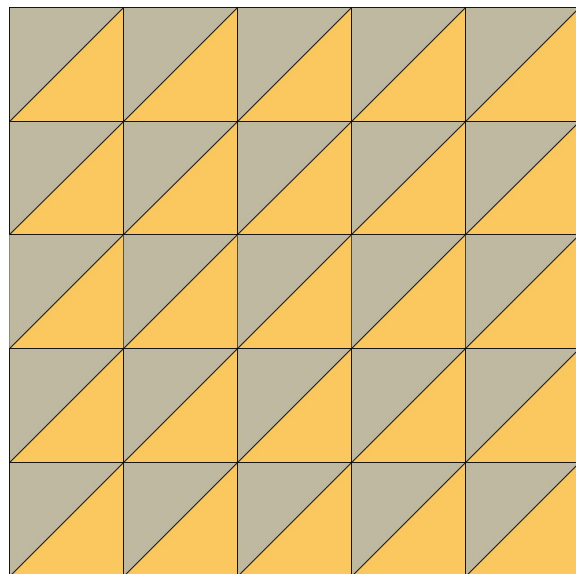
MO-44



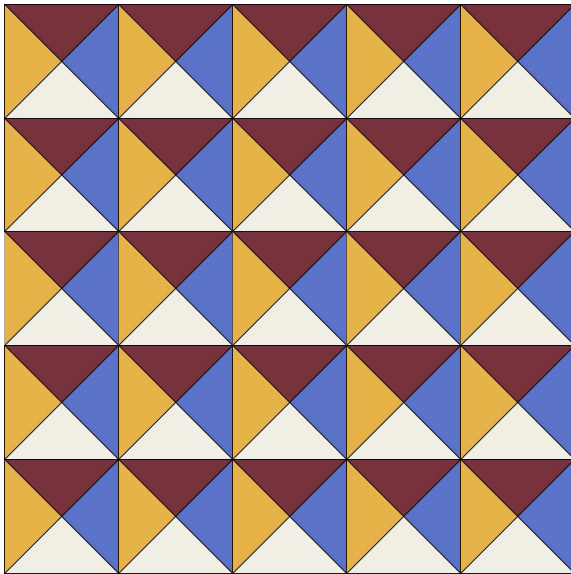
MO-45



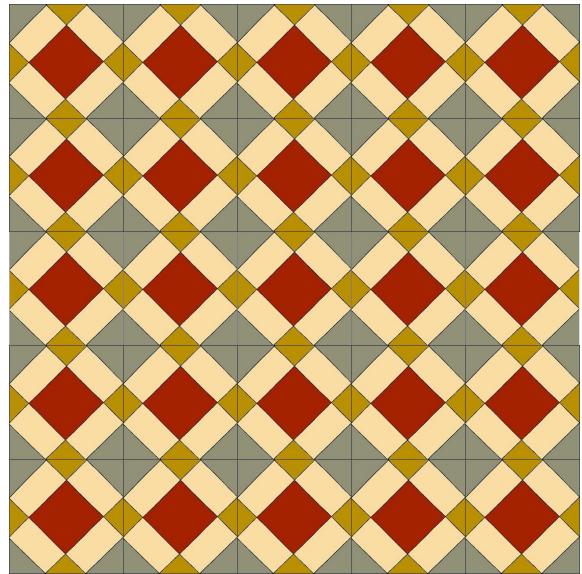
MO-46



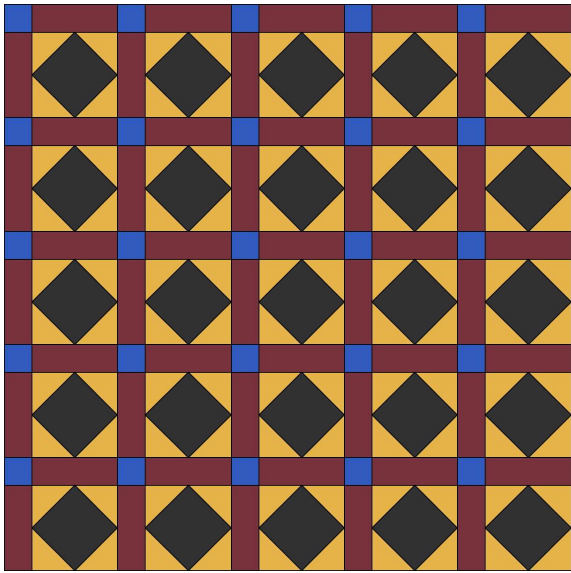
MO-60



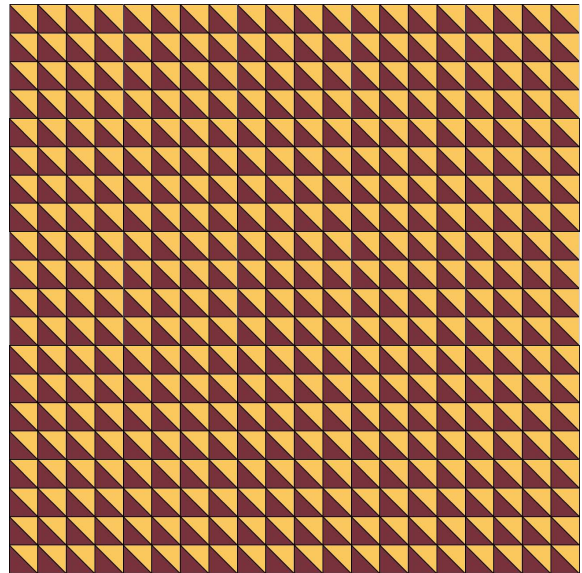
MO-61



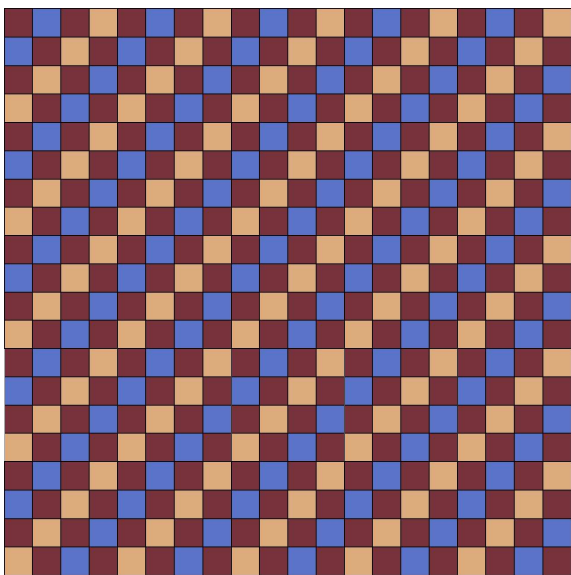
MO-62



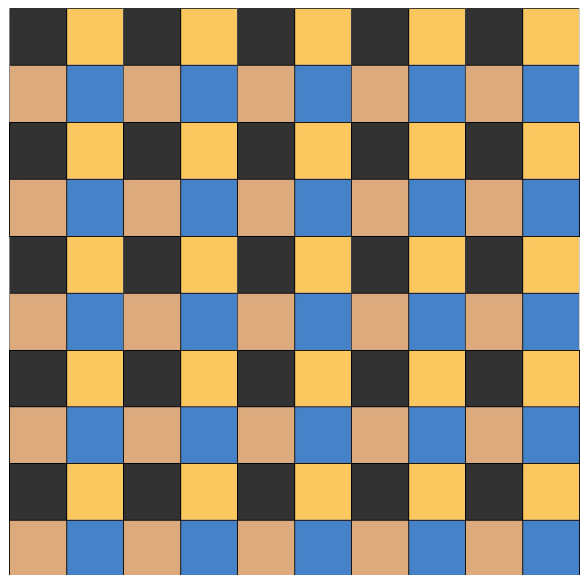
MO-63



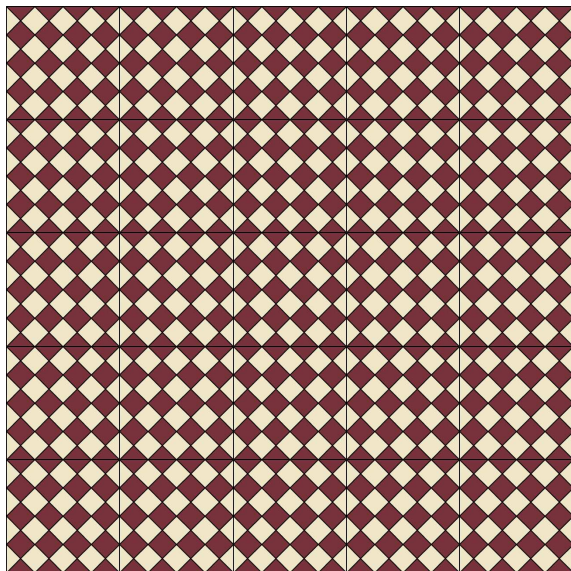
MO-64



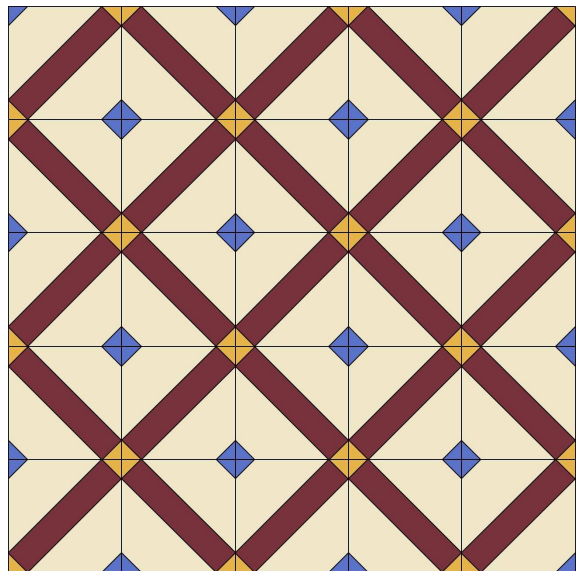
MO-65



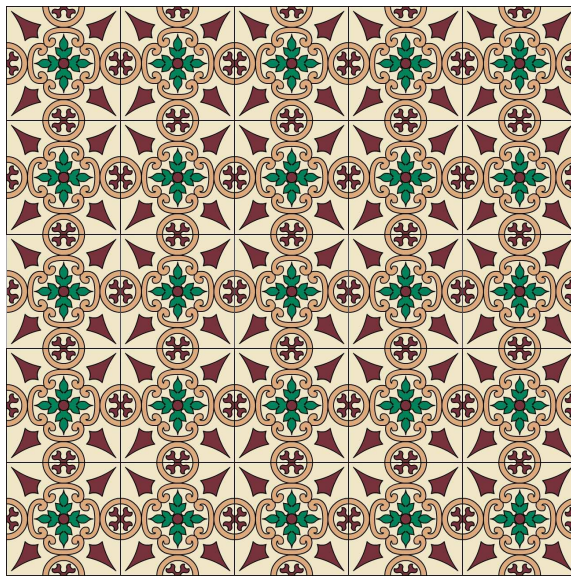
MO-66



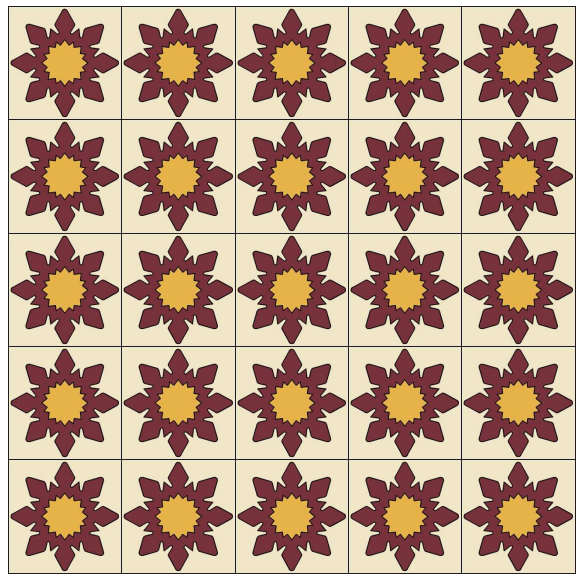
MO-67



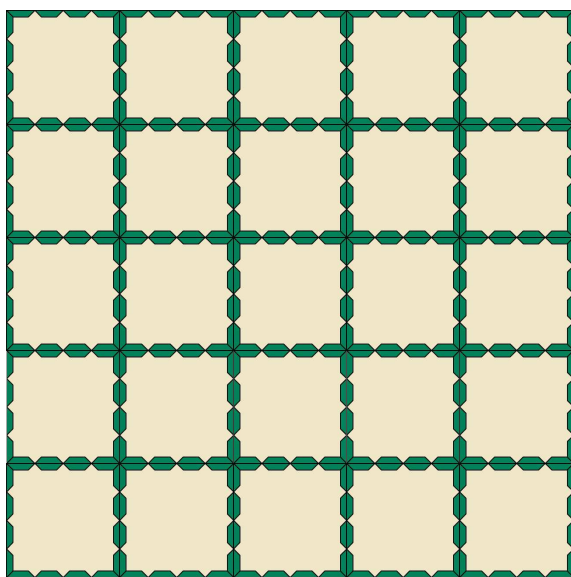
MO-69



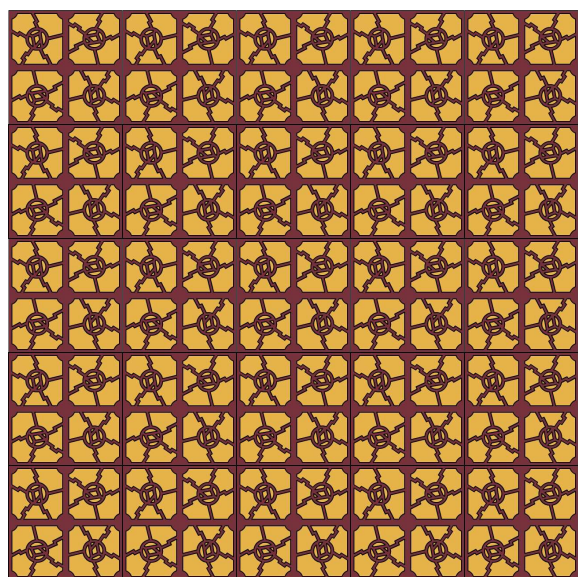
MO-71



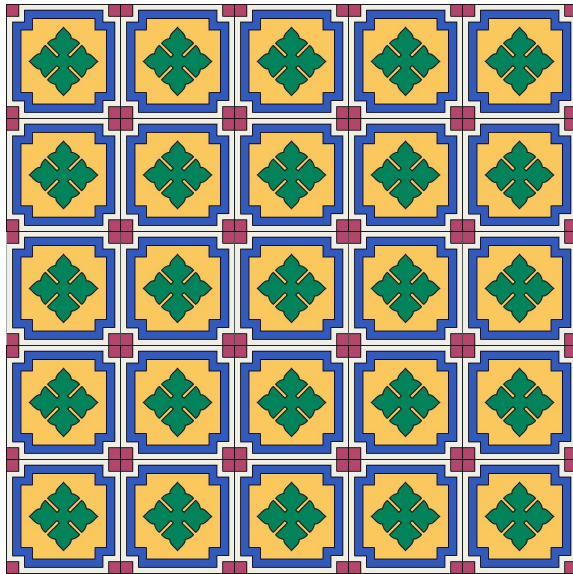
MO-72



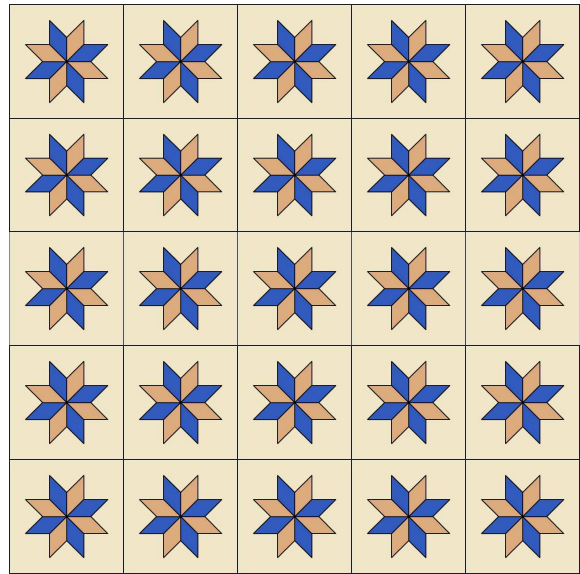
MO-73



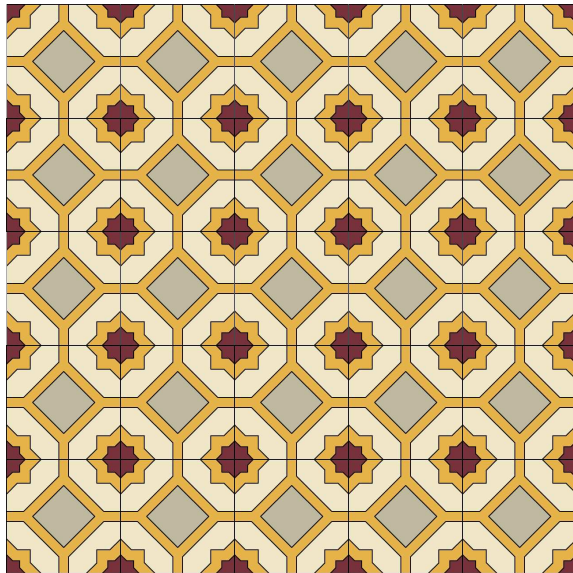
MO-74



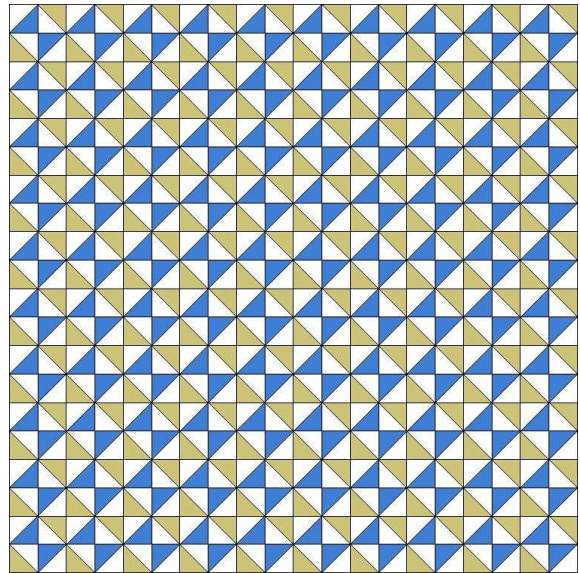
MO-75



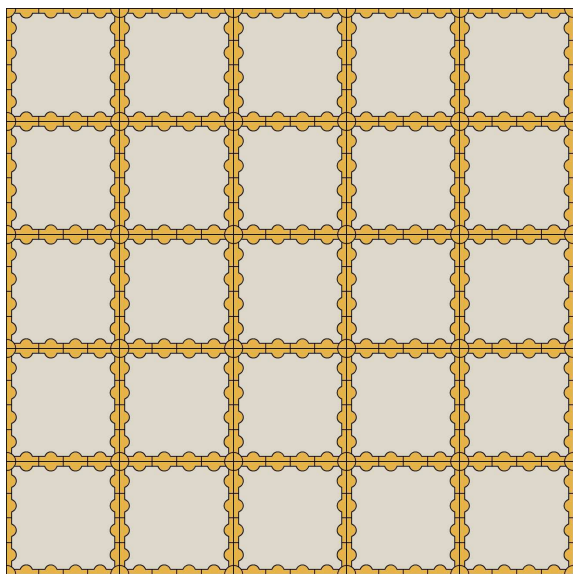
MO-76



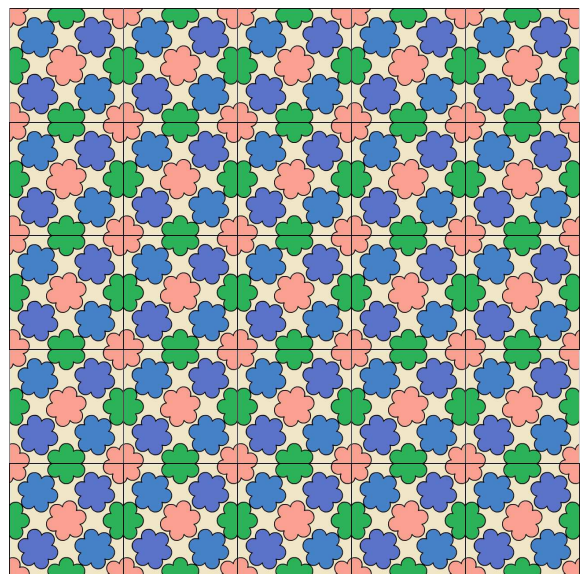
MO-77



MO-78



MO-80



MO-83



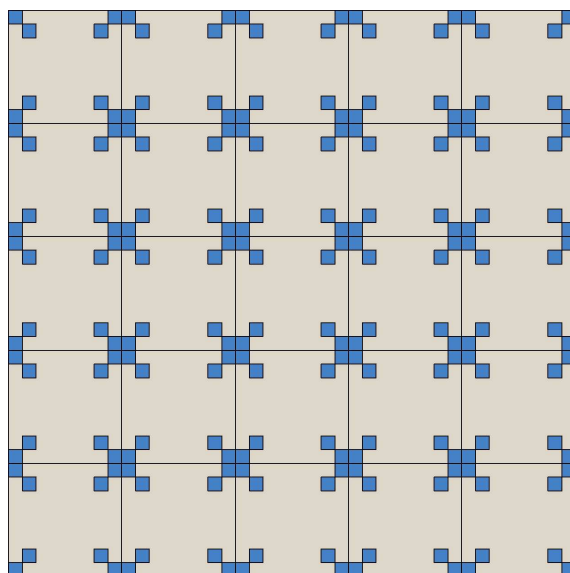
MO-85



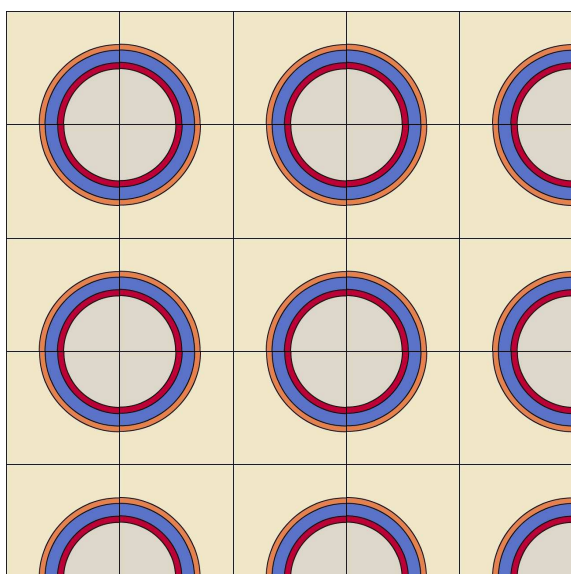
MO-86



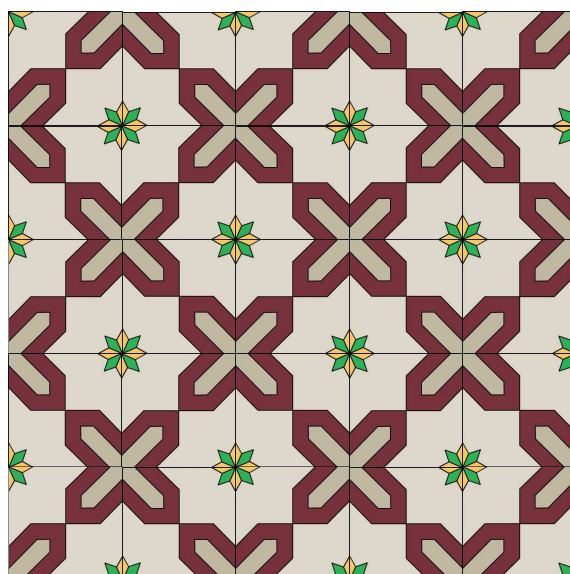
MO-87



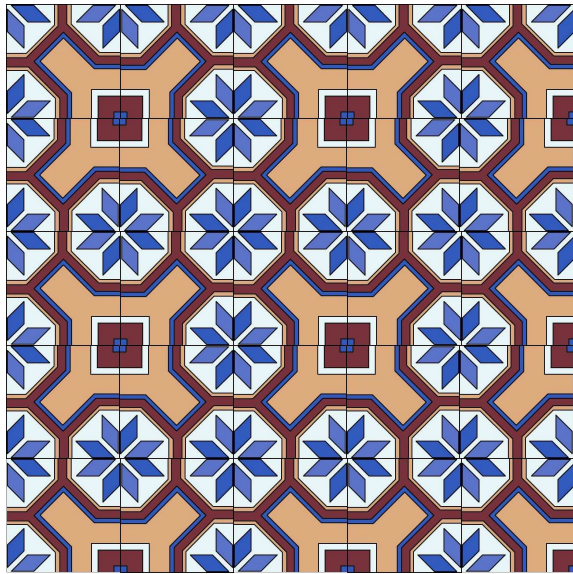
MO-88



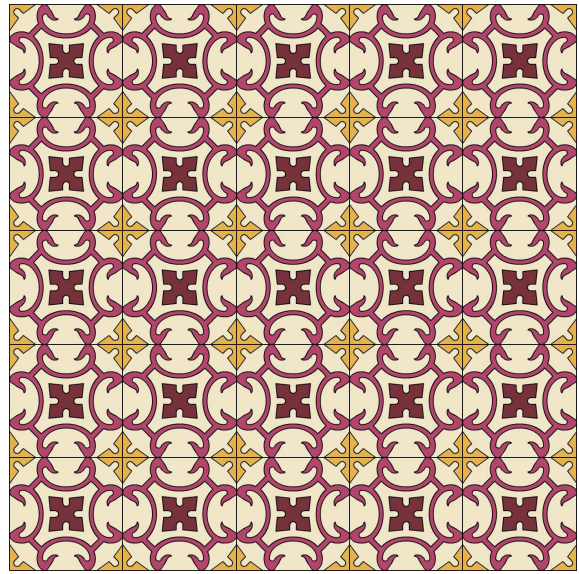
MO-89



MO-90



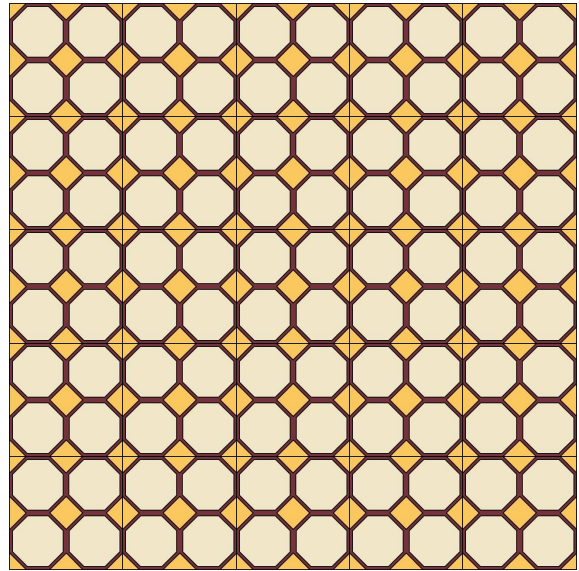
MO-91



MO-92



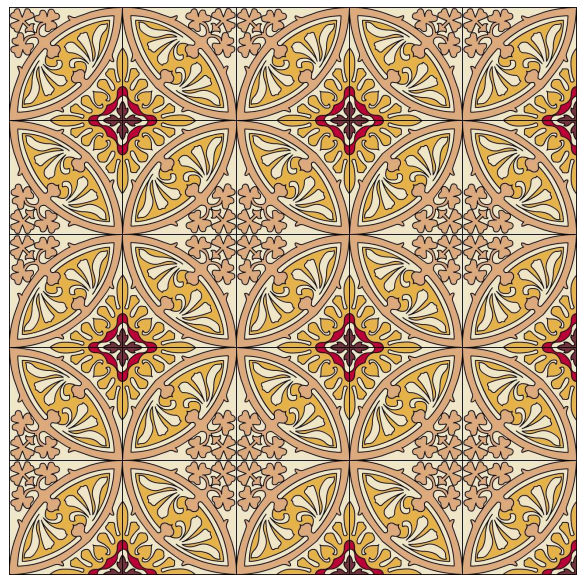
MO-94



MO-96



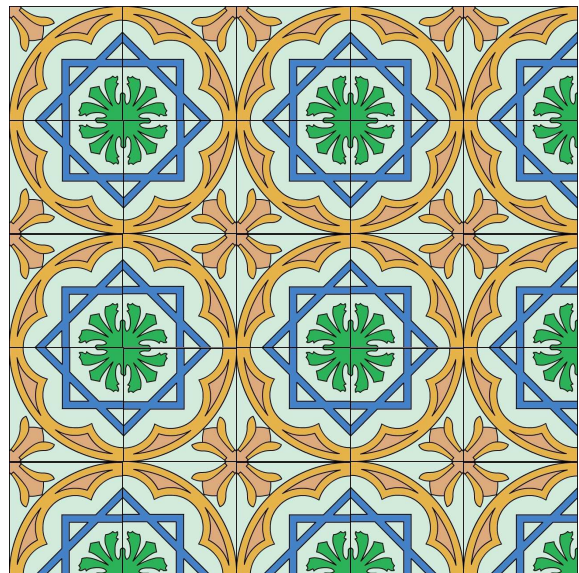
MO-97



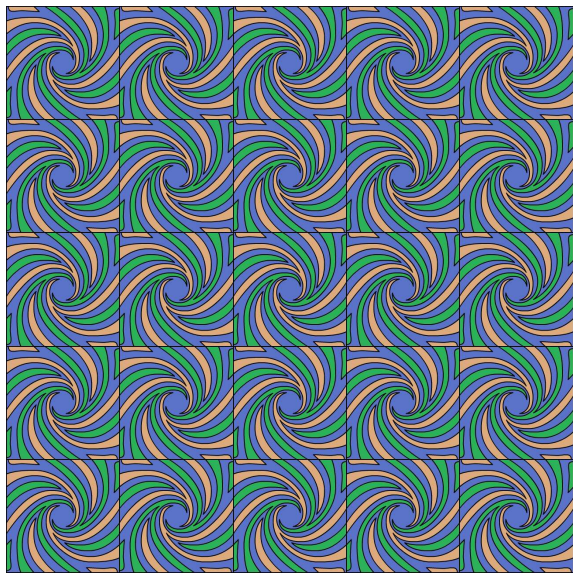
MO-99



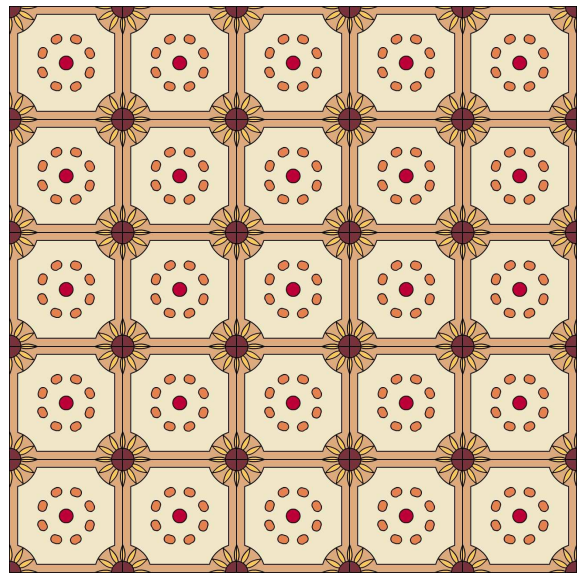
MO-101



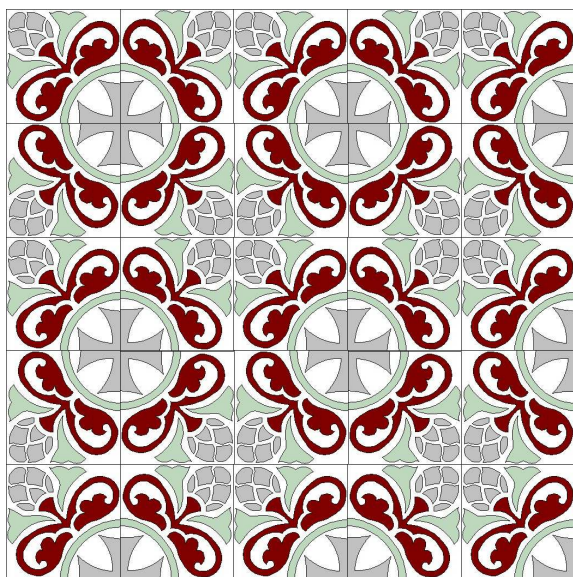
MO-102



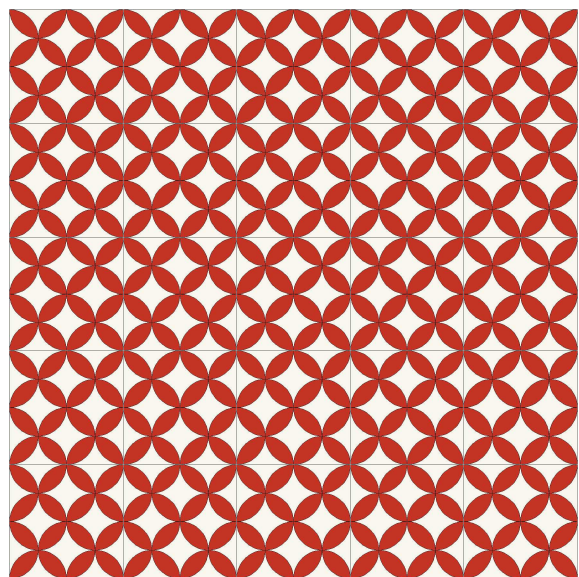
MO-103



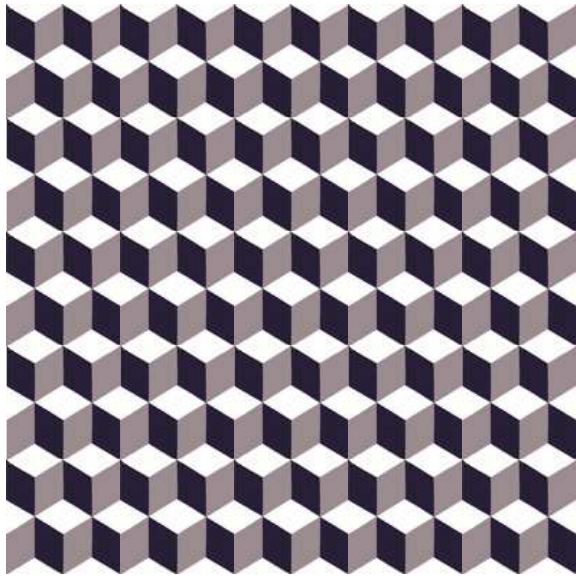
MO-105



MO-106



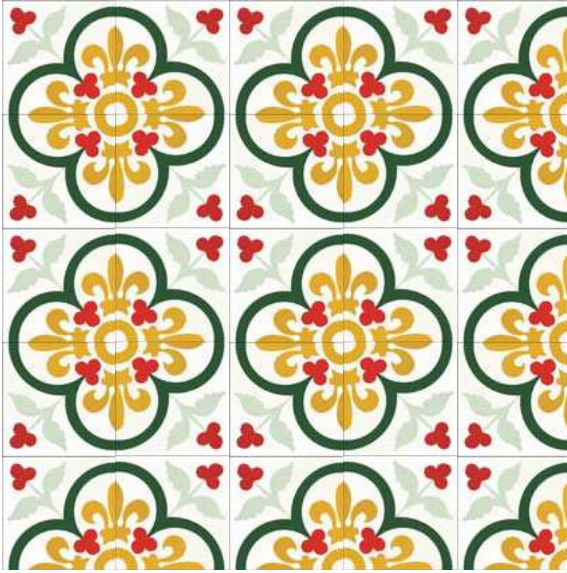
7080



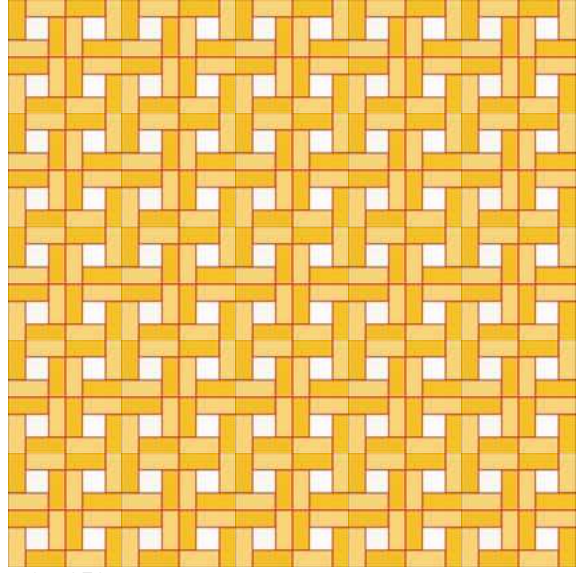
7290



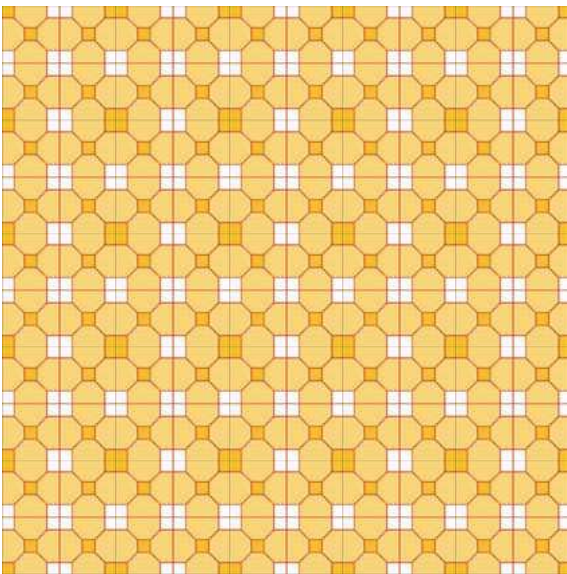
MO-7100



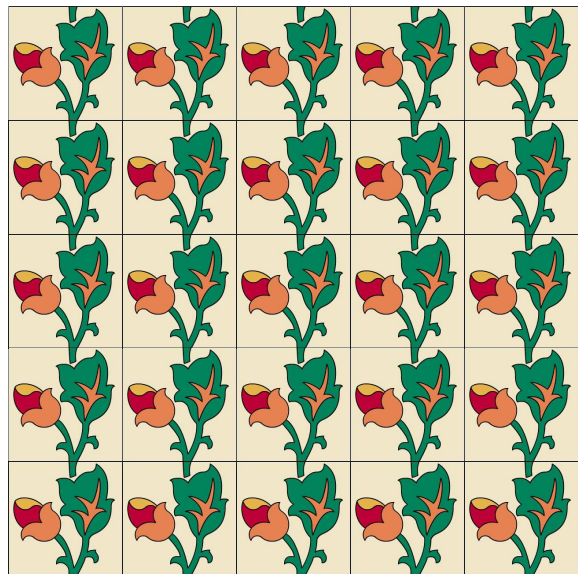
MO-7310



MO-7350



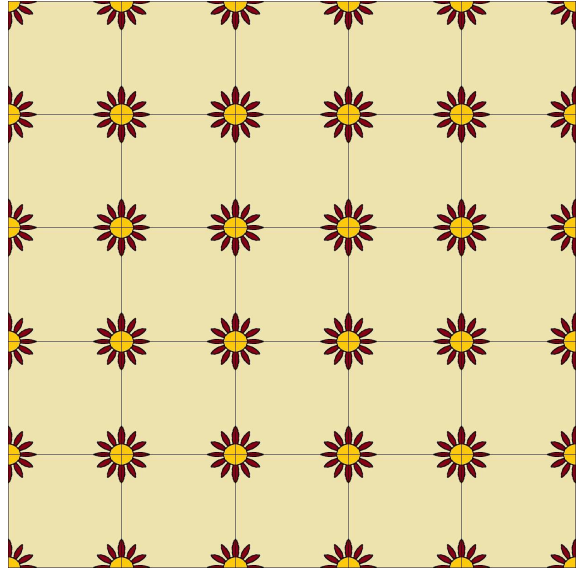
MO-7420



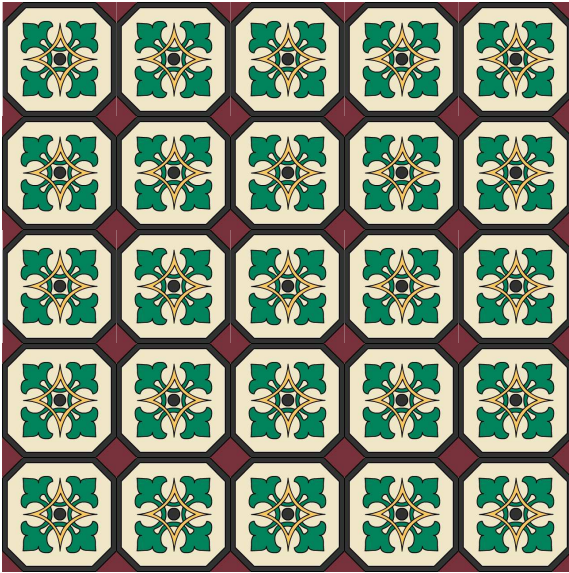
Rosa P



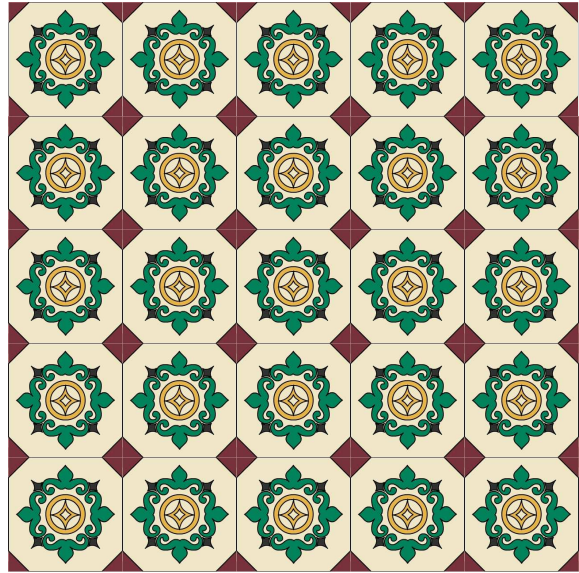
Rosa-G



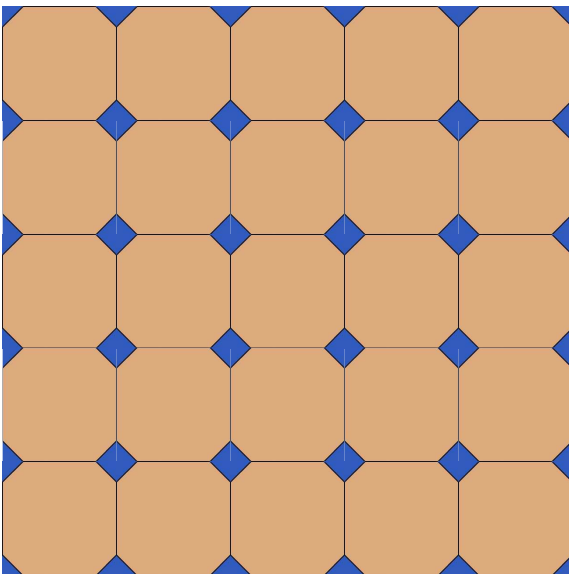
MO-105-B



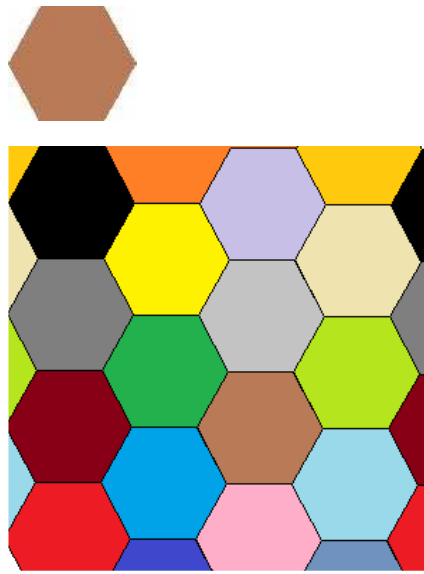
Octogonal-A



Octogonal-B

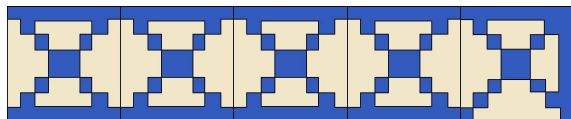


Octogonal-L



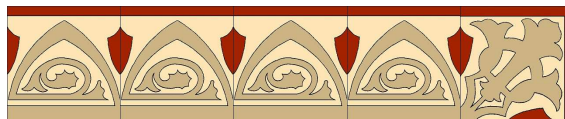
Hexagonal

20x20 - Sanefes · cenefas · Border · Frise



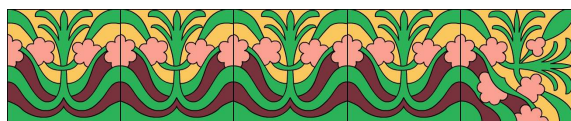
CE-17

CA-17



CE-19

CA-19



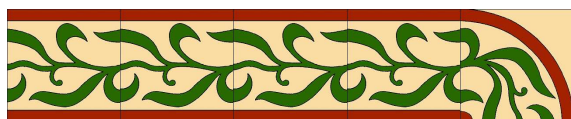
CE-23

CA-23



CE-24

CA-24



CE-28

CA-28



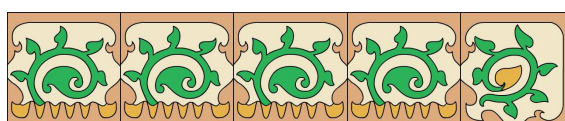
CE-30

CA-30



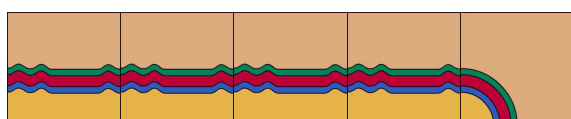
CE-30

CA-30-B



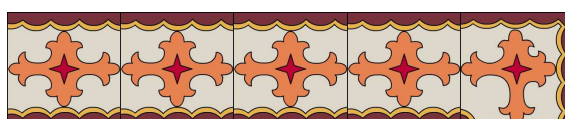
CE-32

CA-32



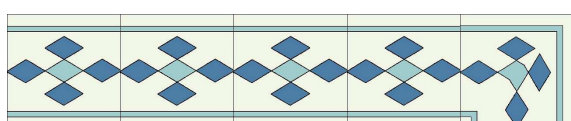
CE-61

CA-61



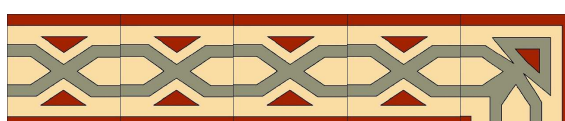
CE-63

CA-63



CE-67

CA-67



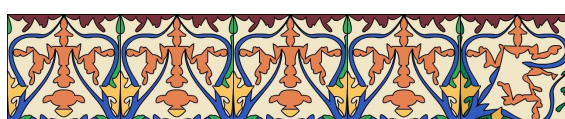
CE-78

CA-78



CE-81

CA-81



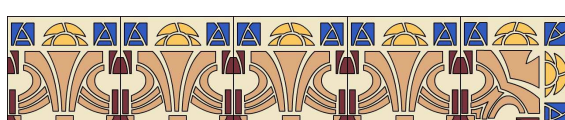
CE-82

CA-82



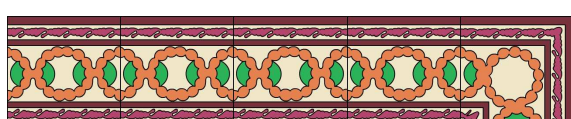
CE-84

CA-84



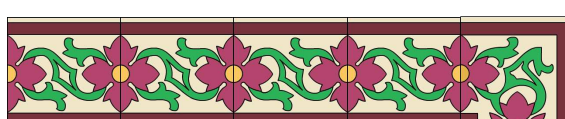
CE-85

CA-85



CE-93

CA-93



CE-95

CA-95



CE-98

CA-98



CE-105

CA-105



CE-105

CA-105-B



CE-8100

CA-8110



CE-8160-2

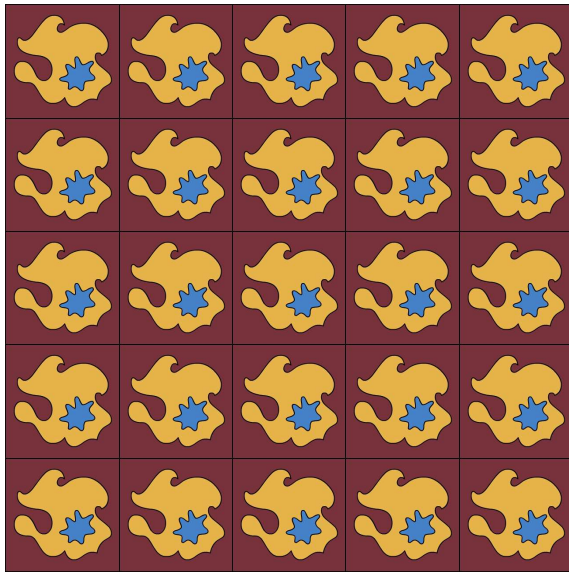
CA-8170-2



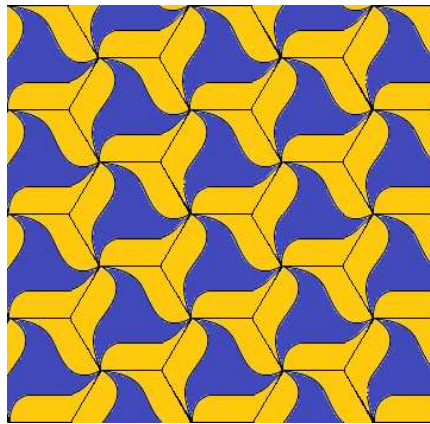
CE-7920

CA-7930

25x25 - Dissenys · Modelos · Designs · Designs



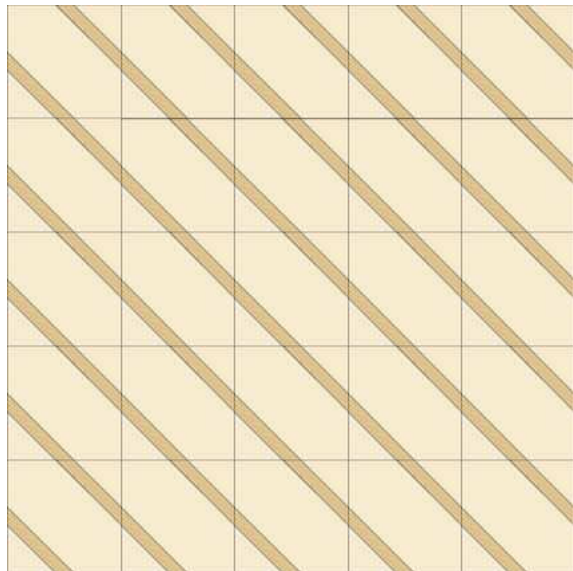
AMEBA



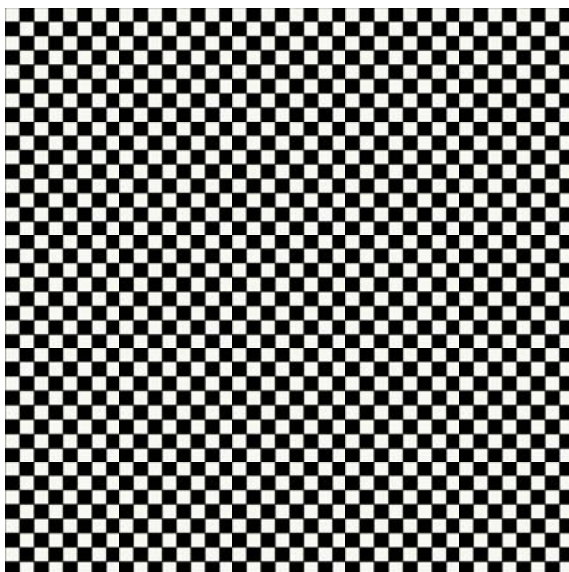
HELIX



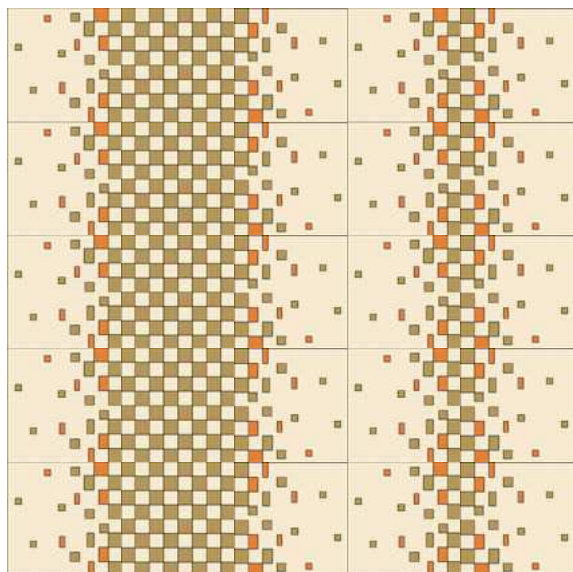
Clotet A



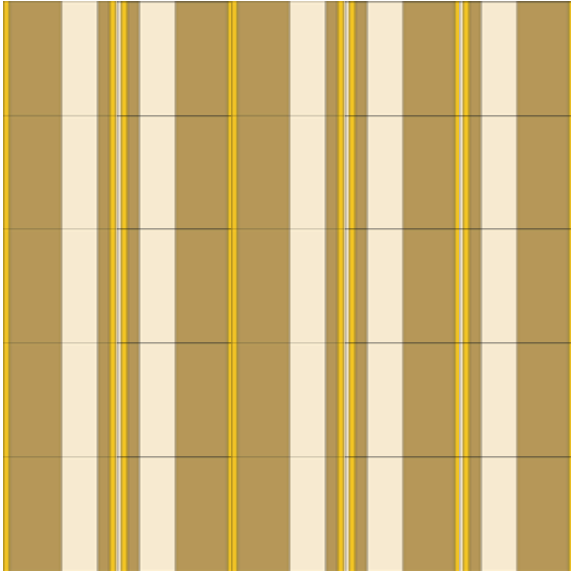
Clotet B



Torres A



Torres B



Ubeda A

Ceramiques Coral

Fundada en 1890

Gran Via de les Corts Catalanes 549

08011- Barcelona

Tel. (34) 93 454 8776

www.ceramiquescoral.cat

info@ceramicascoral.com

Made In
Catalonia
SPAIN

